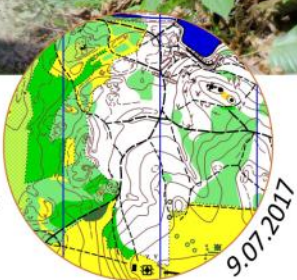
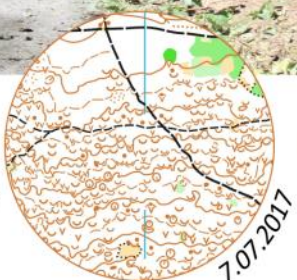
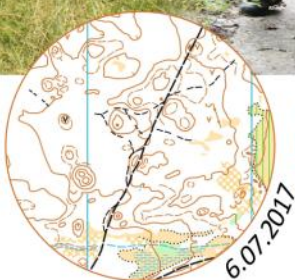
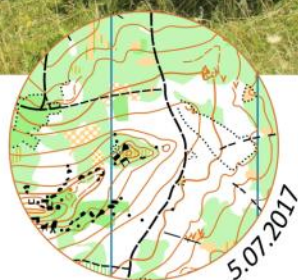


www.wawelcup.pl

5 days of great
orienteering



VISION:

When organizing Wawel Cup, we have in mind the biggest orienteering event in Poland, which past years gained more than 1000 participants. The competition that is renowned in Poland and recommended by foreign competitors. The run with diversified terrains, good maps, interesting courses and exquisite atmosphere.

Having listened to your feedback from previous edition, we would like to pay attention to every detail. We want to ensure that during Wawel Cup each runner feels superb!

Our aim this year is to create event with "something different" each day awaiting the runners. This is the offer of diversified terrains, interesting competition center location and high level orienteering. This will make Wawel Cup 36. unforgettable!

Event Director

Michał Garbacik

COMPETITION SCHEDULE

03-09.07.2017	trainings - Żelazko
05.07.2017	I stage - Rabsztyn – middle distance - start: 3 p.m.
06.07.2017	II stage - Olkusz – long distance (shortened) - start: 10 a.m.
07.07.2017	III stage - Olkusz – middle distance - scale 1:4000 - start: 10 a.m.
08.07.2017	IV stage - Jaroszowiec – long distance (shortened) - start: 12 a.m.
09.07.2017	V stage – Błędów Desert – middle distance (elongated) start: 10 a.m. ; prize giving ceremony: around 1 p.m.

LOCATIONS

stage I	stage II	stage III	stage IV	stage V
50°18'00.6"N	50°17'25.9"N	50°17'25.9"N	50°20'07.7"N	50°20'10.3"N
19°35'49.8"E	19°31'59.6"E	19°31'59.6"E	19°35'50.5"E	19°33'01.6"E

COMPETITION OFFICE

	4.07	5.07	6.07	7.07	8.07	9.07
hours	6 p.m. – 10 p.m.	11 a.m.- 2 p.m.	8.00-9.00	8.00-9.00	9.00-11.00	8.00-9.00
place	WKS WAWEL 3 Podchorążych Street, Kraków	COMPETITION CENTER	COMPETITION CENTER	COMPETITION CENTER	COMPETITION CENTER	COMPETITION CENTER

PARKINGS

There will be a parking available during stage I, II, III and V (5 PLN per day). During stage IV the organizers do not provide parking place, however there will be a separate map available with suggested parking places for the competitors in the Jaroszowiec village.

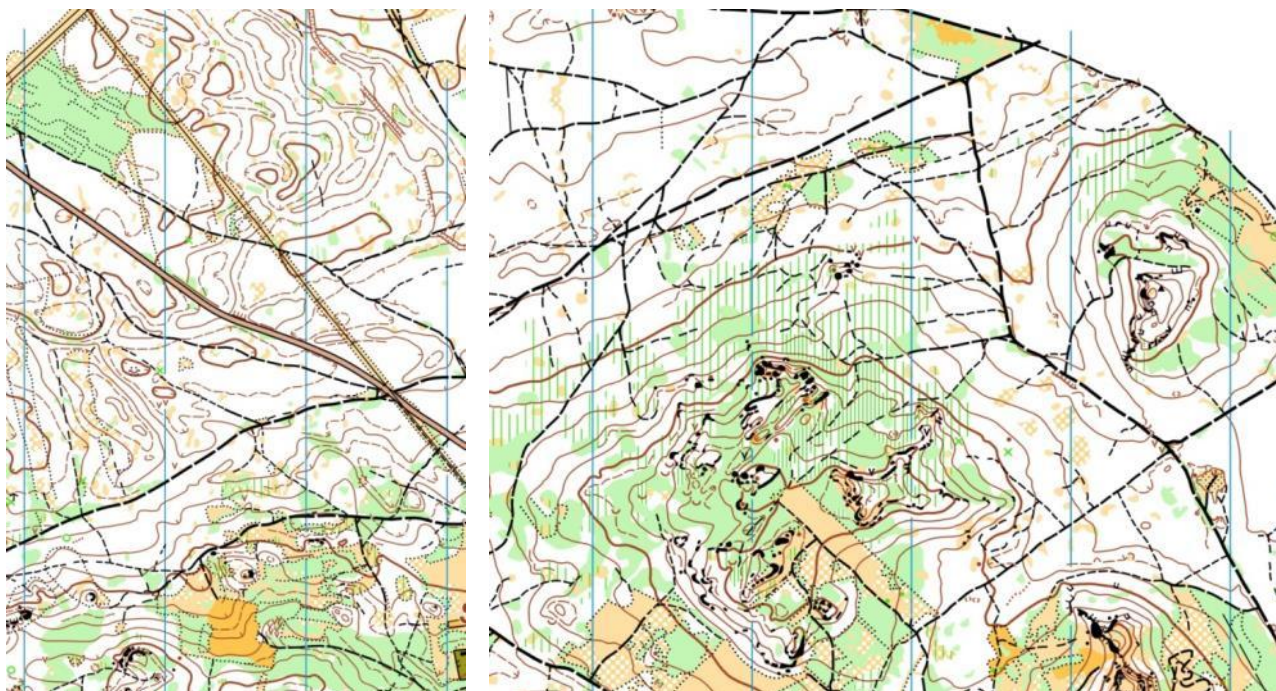
The detailed maps with parking places will be published in a separate post on our website and in the technical bulletin.

TRAININGS

Similarly to last year, we offer you the possibility to join our trainings. However, their will be a bit reorganised this year. The control points for all 3 maps will be ready from Monday noon (03.07.2017) so that the runners coming to Wawel Cup can get to know the terrain earlier. Moreover, this year we do not limit the training duration to one day only. If you feel like running even more, every afternoon (or even at night) you may want to go for a training (the control points will be there till Sunday). The owners agreed for parking cars on their parking for free. All maps are located around CTA "Żelazko" resort (Center of Active Tourism "Zelazko"). We want to have two shortened long courses (Żelazko, Śrubarnia) and one more challenging middle course (Grochowiec).

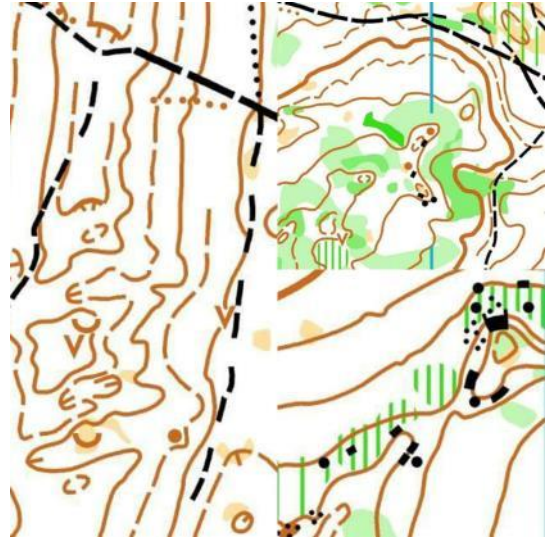
training maps: **Grochowiec, Żelazko, Śrubarnia**

Maps will be available throughout the Wawel Cup in the competition office (and also on Monday and Tuesday in our office on 3 Podchorążych Street in Cracow). One map cost 5 PLN.



STAGE I - Rabsztyn

First stage is all about fast running. Mostly very good visibility and runnability. In the north part, participants will run on flat terrain with interesting subtle contour details (depressions, hills, knolls). In the southern part you may expect larger height differences and the end will be led through rocks and surroundings of Rabsztyn castle. It promises to be interesting running and it's only a warm-up!



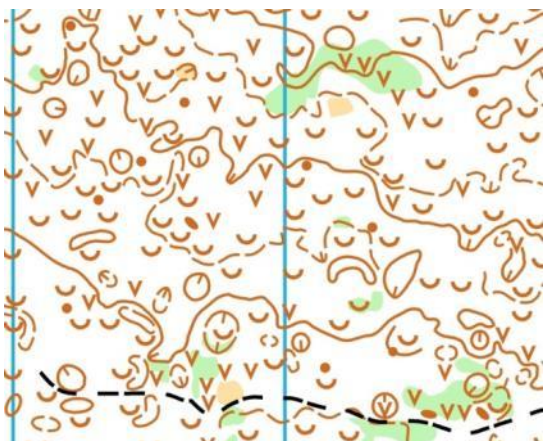
STAGE II- Olkusz Drift

The terrain of the second stage will be very technically demanding. The path and road network is poorly developed. The visibility and the runnability stretches from very good to difficult. There are semi-open lands in the large part of the forest. You may expect diverse subtle contour details and slight height differences (apart from northern part of the map, where runners from certain categories will run across drift). A valuable tip from organizers: don't forget your compass!



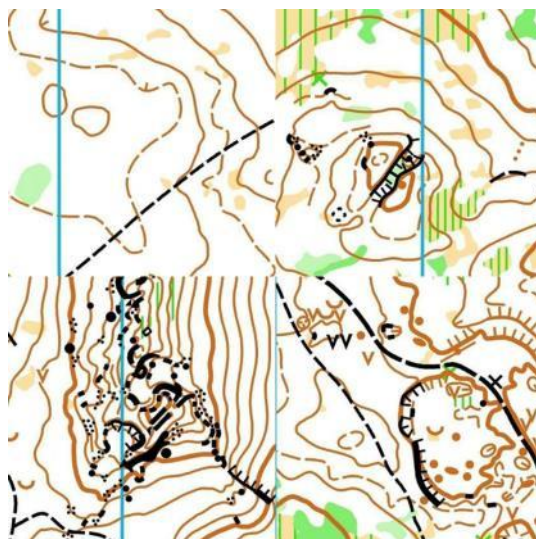
STAGE III – Olkusz Pits

The terrain for third stage is unique for a worldwide scale. The area of 0,33 square kilometer is marked by 791 pits and depressions. It is worth noticing that almost every pit is at least 7 meters deep. In order for the map to be more legible, our mapper used symbols from 1:7500 scale (we run on 1:4000); road network is not well developed, there's good runnability.



STAGE IV - Jaroszewiec

During our 4th stage the competitors will face the typical Jura terrain. Large number of rocks and rock walls. The road network is well developed. The visibility and runnability from very good to difficult. You may expect the highest height differences during stage IV.



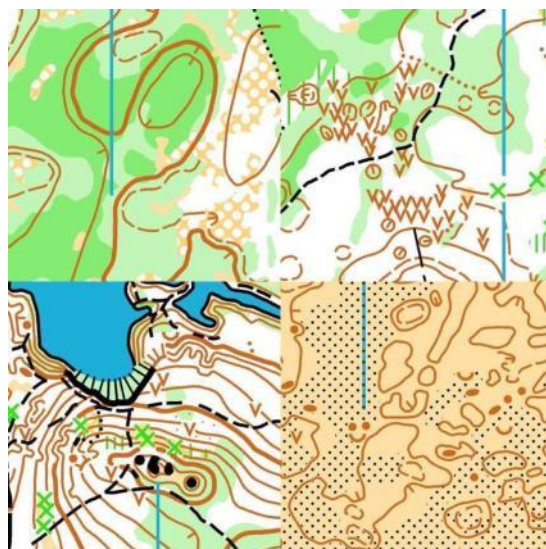
STAGE V – Błędów Desert

The last stage will be a real mixture of all the other days. You will find the following:

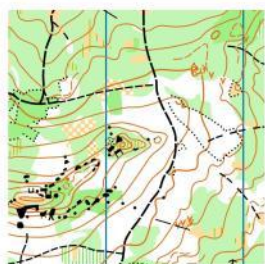
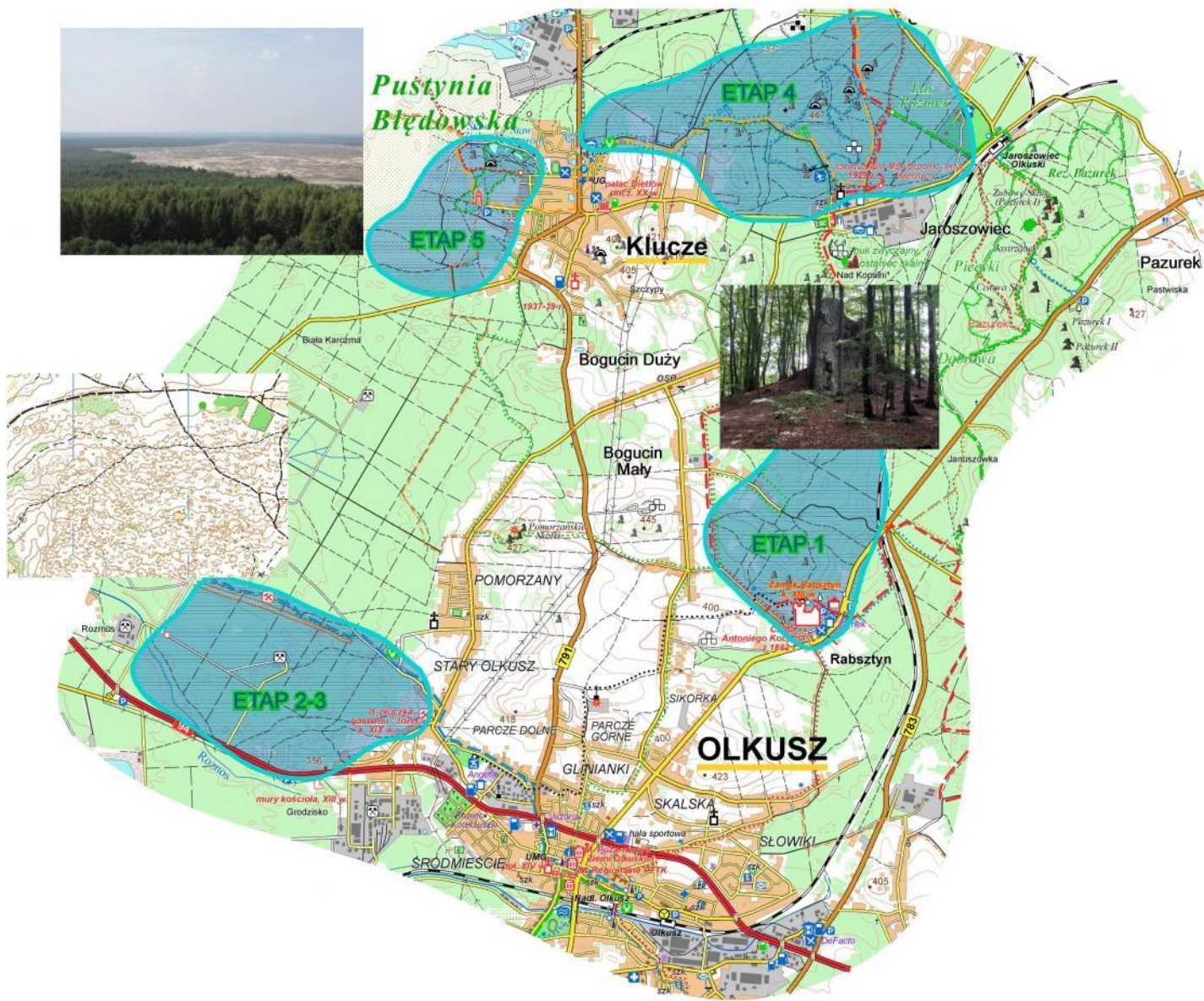
- well runnable and fast forest from Rabsztyn
- glades and thickets who will accompany you during stage 2
- 5 meters deep pits
- rocks

and the real dessert: desert with diversified subtle contour details.

The last days promises some good running, the terrain is very diverse!



THE LOCATOR MAP



5.07.2017



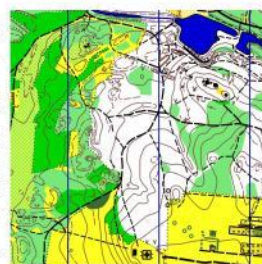
6.07.2017



7.07.2017



8.07.2017



9.07.2017

TYPE OF EVENT

Five-days individual competitions. Four stages are held in time interval, and the last one will be played in handicap form. (For categories K21 i M21 in upside-down handicap).

Stage III - VII Bartek Moniak's memorial in category M14

In overall classification in category M55 – VI Leszek Podsiadły's memorial.

ENTRY FEE

I due date - 31.03.2017		II due date - 30.06.2017	
W/M 10-16	80 PLN	W/M 10-16	90 PLN
W/M 18+	130 PLN	W/M 18+	150 PLN
<i>One start</i>		<i>One start</i>	
W/M 10-16	20 PLN	W/M 10-16	25 PLN
W/M 18+	30 PLN	W/M 18+	35 PLN

ACCOMODATION

Accommodation next to Bydlin stadium.

Since the school in Klucze is undergoing renovation, we were forced to change the location of provided accommodation. Those of you who have booked a place there, have already been informed. There are showers and toilets available as well as the access to football & basketball pitch, hangout room and inbuilt barbecue.

Reservation for accommodation is finished.

Localization:

69 Legionów Street, Bydlin
50°22'55.8"N 19°38'30.2"E

The stadium will open from Tuesday 6 p.m..

gym
campsite

15 PLN per person
15 PLN per tent + 10 PLN per person per day

AGE CATEGORIES

WM10R; W10N; W10; W12; W14; W12-14B; W16; W18; W20; W21; W21B; W35; W40; W45;
W35-45S; W50; W55; W60; W65; W70; W80
M10; M10N; M12; M12-14B; M16; M18; M20; M21; M21B; M35; M40; M45; M35-45S; M50; M55;
M60; M65; M70; M75; M80; OPENlong; OPENshort

TRASY:

N – marked; **R** – family; **S** – shortened

GRILL

In the competition center you will find a barbecue with various dishes. What is more, there will be soft cold drinks and sweets available and maybe something more as well... you can buy vouchers in the special prices for the following meal: meat and grilled vegetables.

PRIZES

Winners of the stages

We provide prizes for the winners of each of the first four stages. We will hand it over during the competition once the winner is announced (similarly to last year).

All participants in the family category WM10R will receive a small gifts so we won't give additional prizes to first three winners in this category.

In the Wawel Cup general classification we provide statues and diplomas for the first three best winners in each of the categories.

For the winners in the category WM21 there will be following prizes granted:

I place – **300 PLN**
II place – **200 PLN**
III place – **100 PLN**

The competitors in the memorial categories will receive cups.

The awarding ceremony in the general classification will take place on Sunday 09.07.2017 around 1:00 pm.

EXTRA INFORMATIONS

- Courses WM10N i WM10R will be marked by „smile and sad faces”. In competition center will be a medical aid.
- Competitors are obliged to have valid medical examinations. Managers of teams are responsible for checking the medical examinations.
- Organizer have bought civil responsibility insurance.
- Organizer doesn't bear the costs of individual insurance.
- Applications to the competition means agreement with all decisions from the bulletin and agreement for transformation personal data.
- All dispute issues are adjudicated by main referee.

ORGANIZER

WKS „Wawel”
3 Podchorążych Street
30-084 Kraków
e-mail: wawel.bno@gmail.com



CO-ORGANIZERS

Office of the Marshal
of Malopolska Region
22 Basztowa Street
31-156 Kraków



Malopolska Orienteering Federation
3 Podchorążych Street
30-084 Kraków



SPONSORS

FORYTEK&PARTNERZY
Grzegórzecka 21 Street,
31-532 Kraków

FORYTEK&PARTNERZY

GRUPA INCO S.A.
41 Partyzantów Street
42-230 Koniecpol



WAWEL CUP 36.

Klucze, 5-9.07.2017

XXXVI International Orienteering Competition WAWEL CUP 36.

WSP „Społem”
93-95 Mielczarskiego Street
25-726 Kielce



HORTINO
2 Fabryczna Street
37-300 Leżajsk



PARTNERS

Polish Orienteering Federation
30 Jerozolimskie Avenue
00-001 Warszawa



Olkusz
32-300 Olkusz
Rynek 1



Olkusz Forestry Management
3 Łukasińskiego Street
32-300 Olkusz



Biederman Sport
www.biedermansport.pl



MEDIA PARTNER

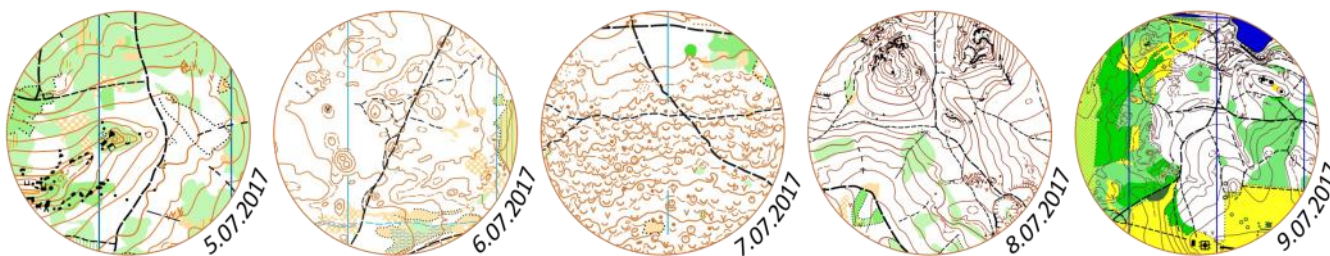
MEDIA PARTNER
www.bieгнаorientacje.pl



ORGANIZERS TEAM

WKS Wawel President:	Piotr Ludwig
Event Director:	Michał Garbacik
Assistant Event Director:	Marek Skorupa
Main Referee:	Paweł Biederman
Technical Director:	Marek Skorupa
Finance Director:	Anna Karnia-Biskupska
Competition Office Manager:	Bogusława Słońska
Course planners:	Włodzimierz Dyzio, Marcin Biederman,
Mappers:	Włodzimierz Dyzio, Jacek Morawski
Parking director:	Jakub Kijak
SI manager:	Marcin Leśnicki
Start Manager:	Marta Listek
Speaker:	Michał Garbacik

5 days of great orienteering



*Serdecznie zapraszamy na / We are happy to invite you to **WAWEL CUP 36.**
organizowany nieprzerwanie od / held continuously since **1982.**
Lokalizacja / Localization: **Rabsztyn, Olkusz, Jaroszewiec, Pustynia Błędowska***